

GR333N

**Office to Envy.**

A Sterling Bay Development

GR333N GR333N GR333 GR333N  
R333N GR333N GR333N GR333N  
333N GR333N GR333N GR333N  
333N GR333N GR333N GR333N  
33N GR333N GR333N GR333N  
N GR333N GR333N GR333N  
GR333N GR333N GR333N GR333N  
GR333N GR333N GR333N GR333N  
R333N GR333N GR333N GR333N  
333N GR333N GR333N GR333N  
33N GR333N GR333N GR333N  
3N GR333N GR333N GR333N  
GR333N GR333N GR333N GR333N  
GR333N GR333N GR333N GR333N

GR333N



## Office to Envy.

Introducing 333 North Green, a ground-up new construction 555,524 square foot creative office and prime retail building located in Chicago's most dynamic neighborhood: Fulton Market. Developed by Sterling Bay and designed by Gensler, 333 North Green is the future of Fulton Market office destinations. With forward-thinking design, a robust amenity package and an unbeatable location, 333 North Green will redefine how you office.



## The Desired Details.

19 stories

---

555,524 SF

---

32,489 SF available

---

Designed by Gensler

---

Efficient 40,000 SF floor plates

---

Minimal columns

---

Robust amenity package

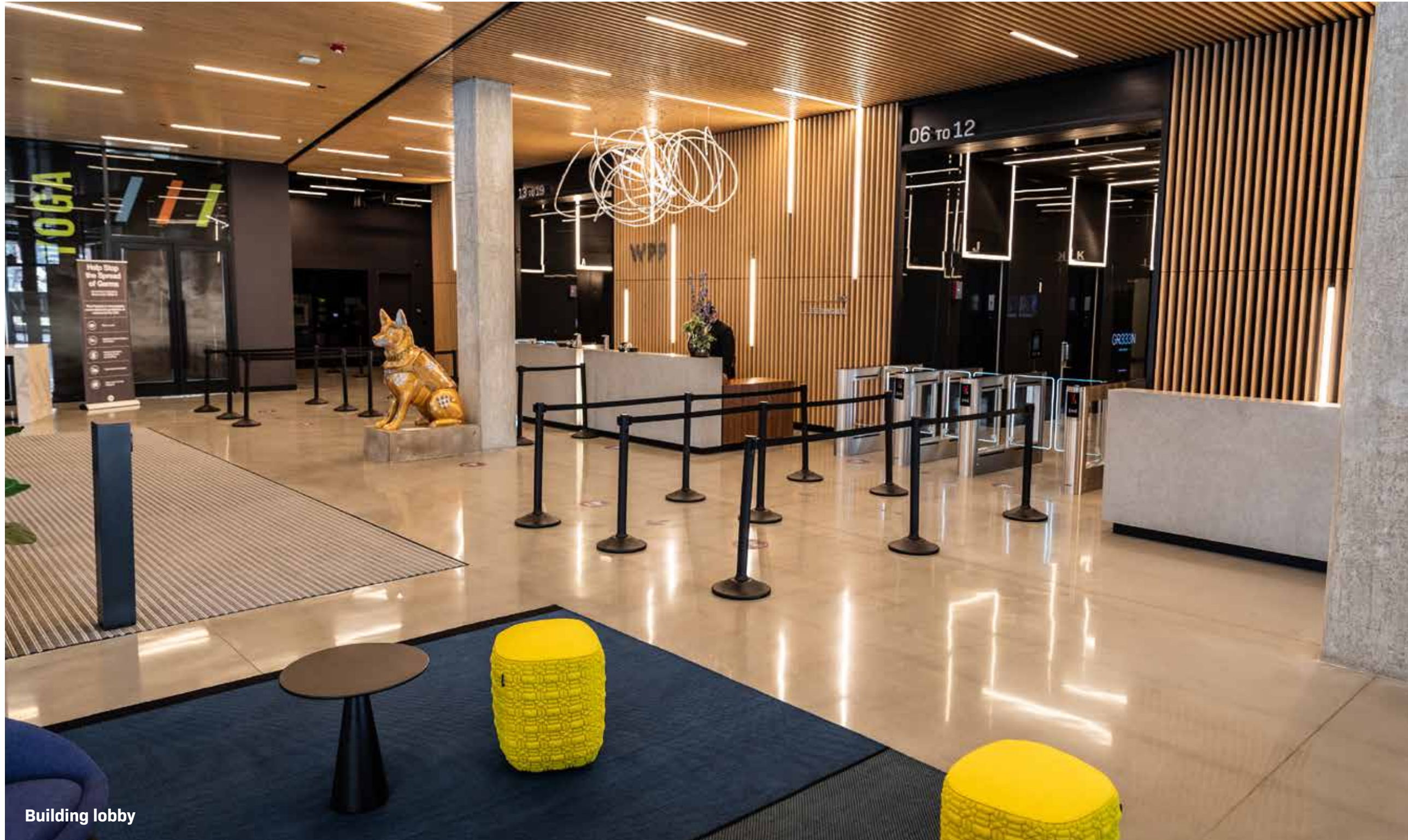
---

29,000 SF of prime retail

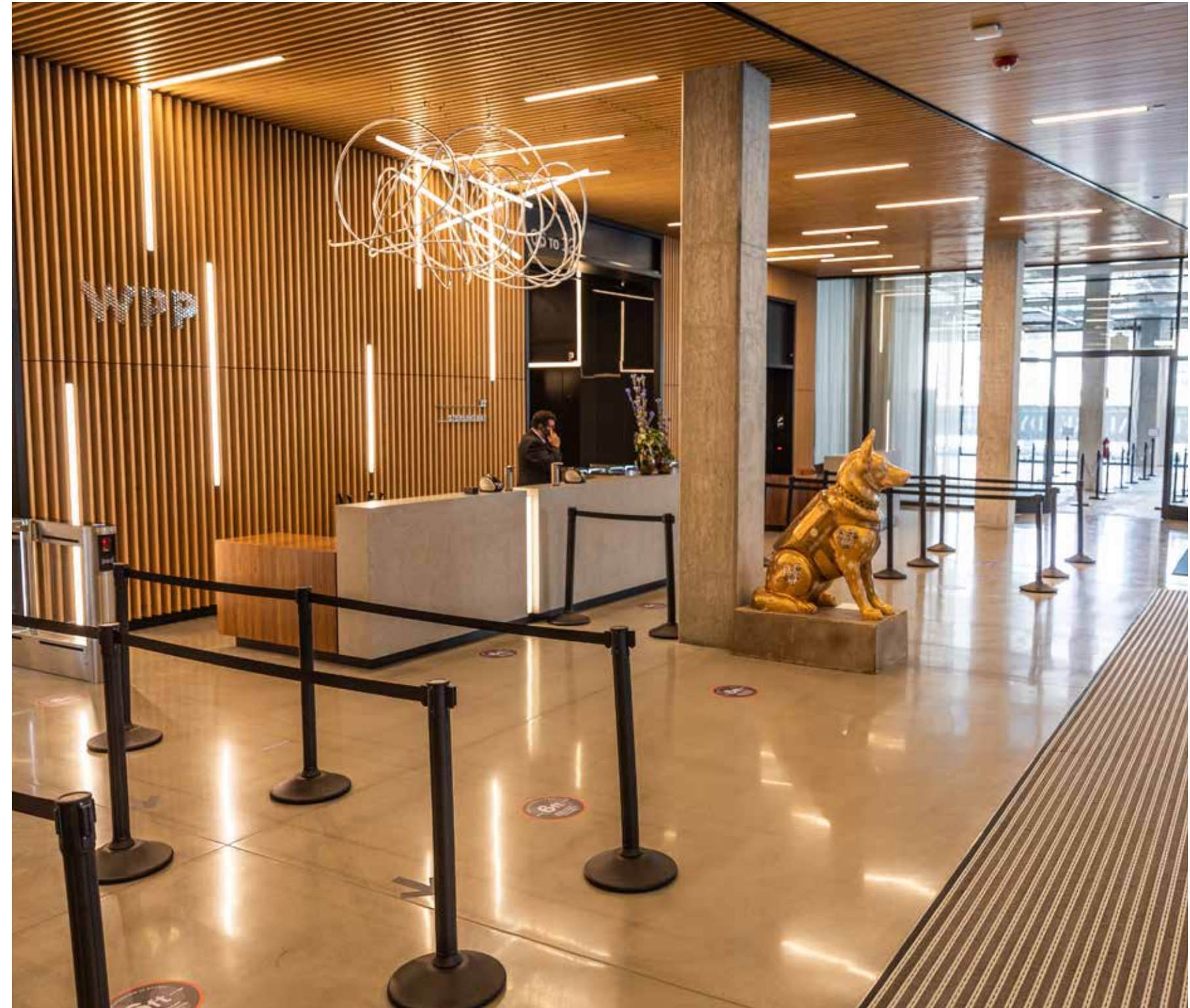
---

Immediate Delivery





Building lobby





Amenity space

## Lustworthy Amenities.

The tenant amenity package at 333 North Green is unmatched in the market and will include:

---

Sky deck overlooking the city

---

Tenant lounge, bar and gaming area

---

Full-service fitness center

---

Programmed yoga room

---

Conference facilities

---

Building library

---

Shuttle service to Ogilvie and Union stations

---

Secure bike room

---

24-hour security

---

Indoor parking for over 300 cars

---

Insider access to SB+

---

Pressbox dry cleaning

---

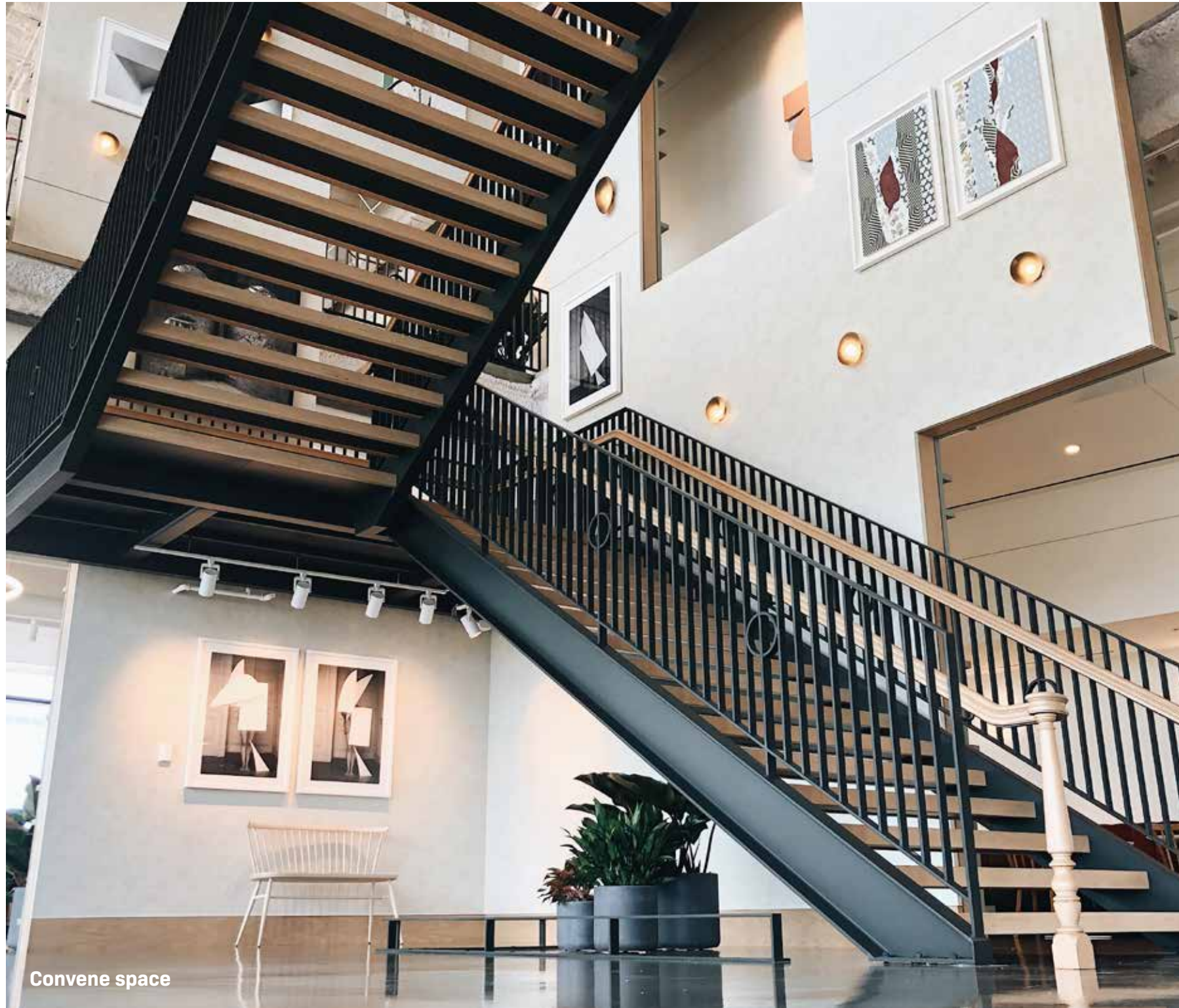
Over 29,000 SF of prime retail



Amenity space



Amenity space





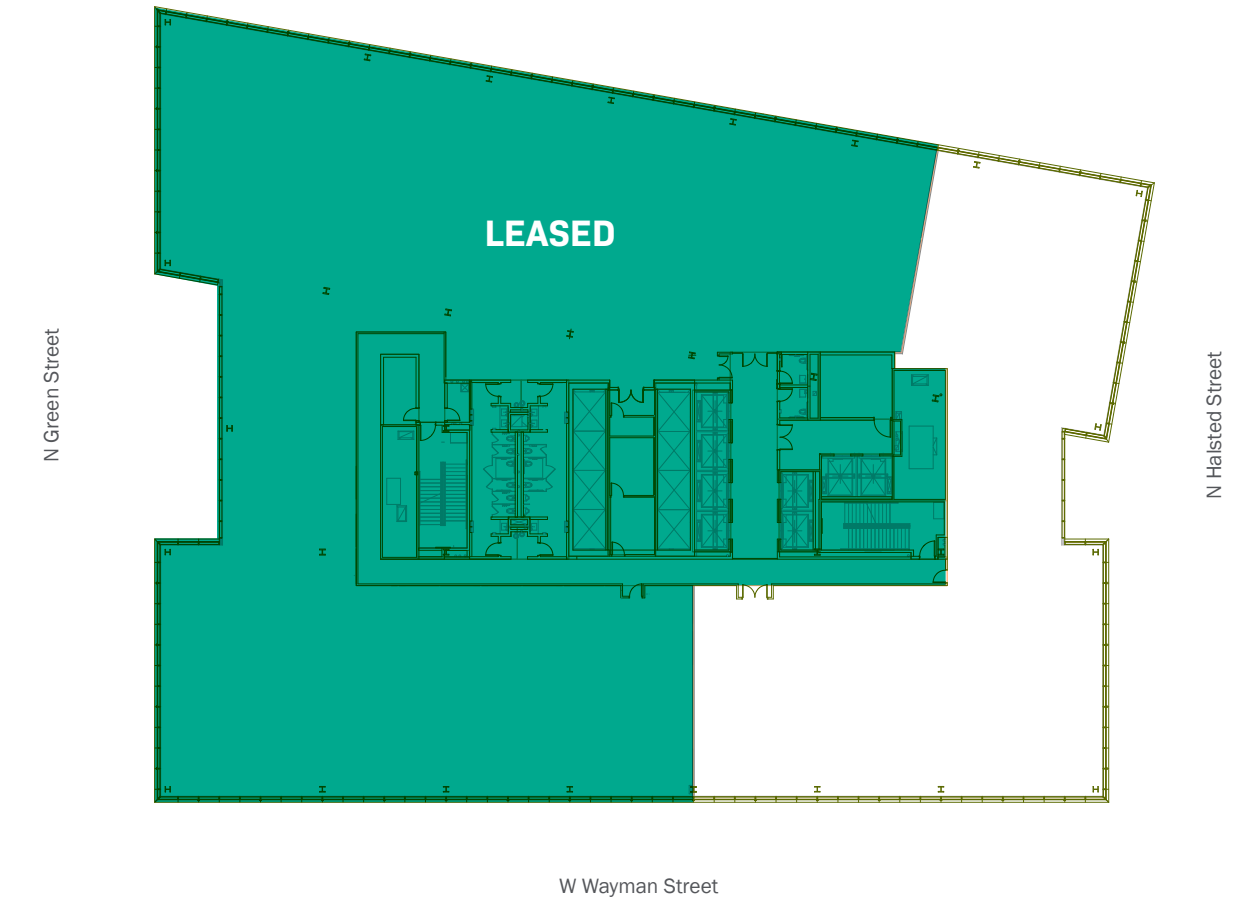
**10th Floor availability**

~20,000 SF

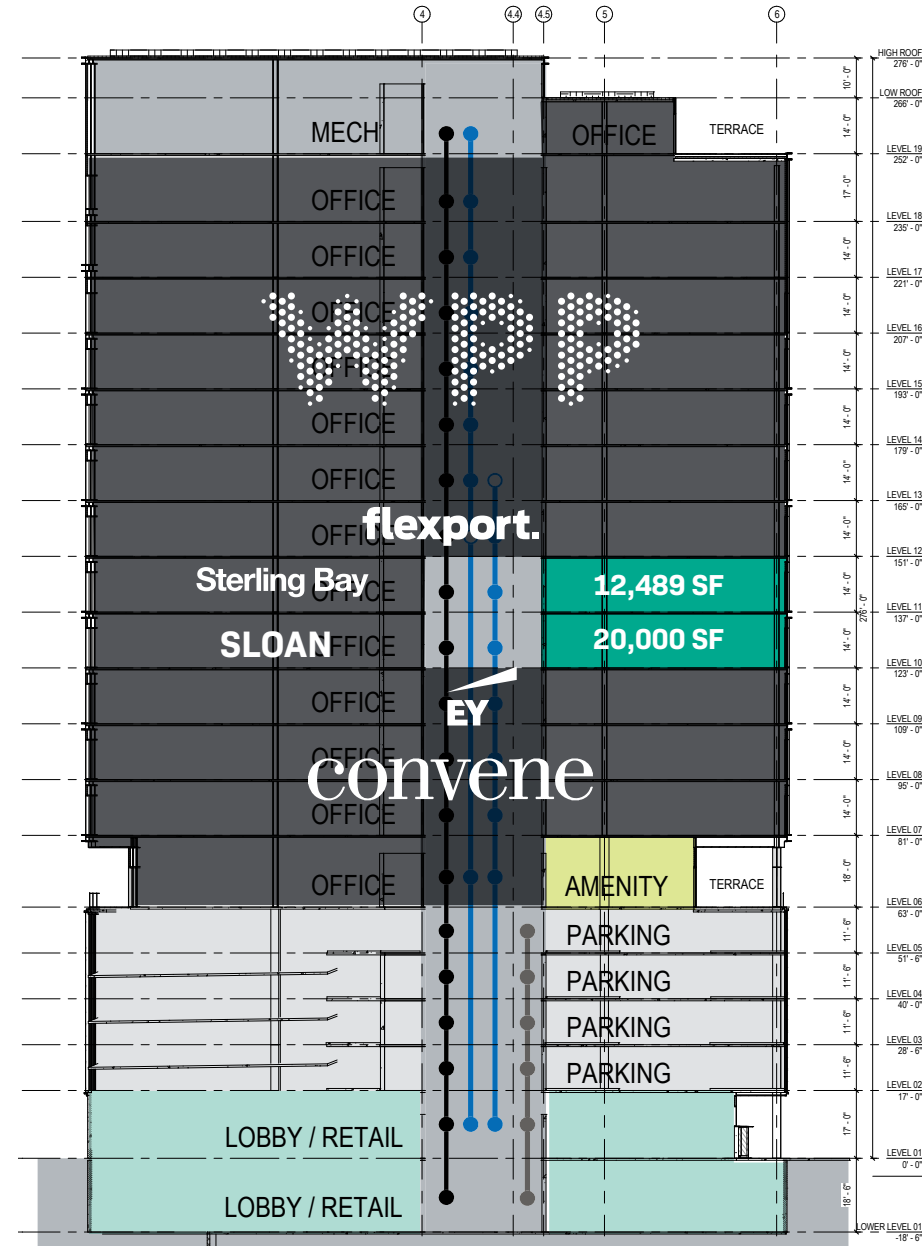


**11th Floor availability**

12,489 SF



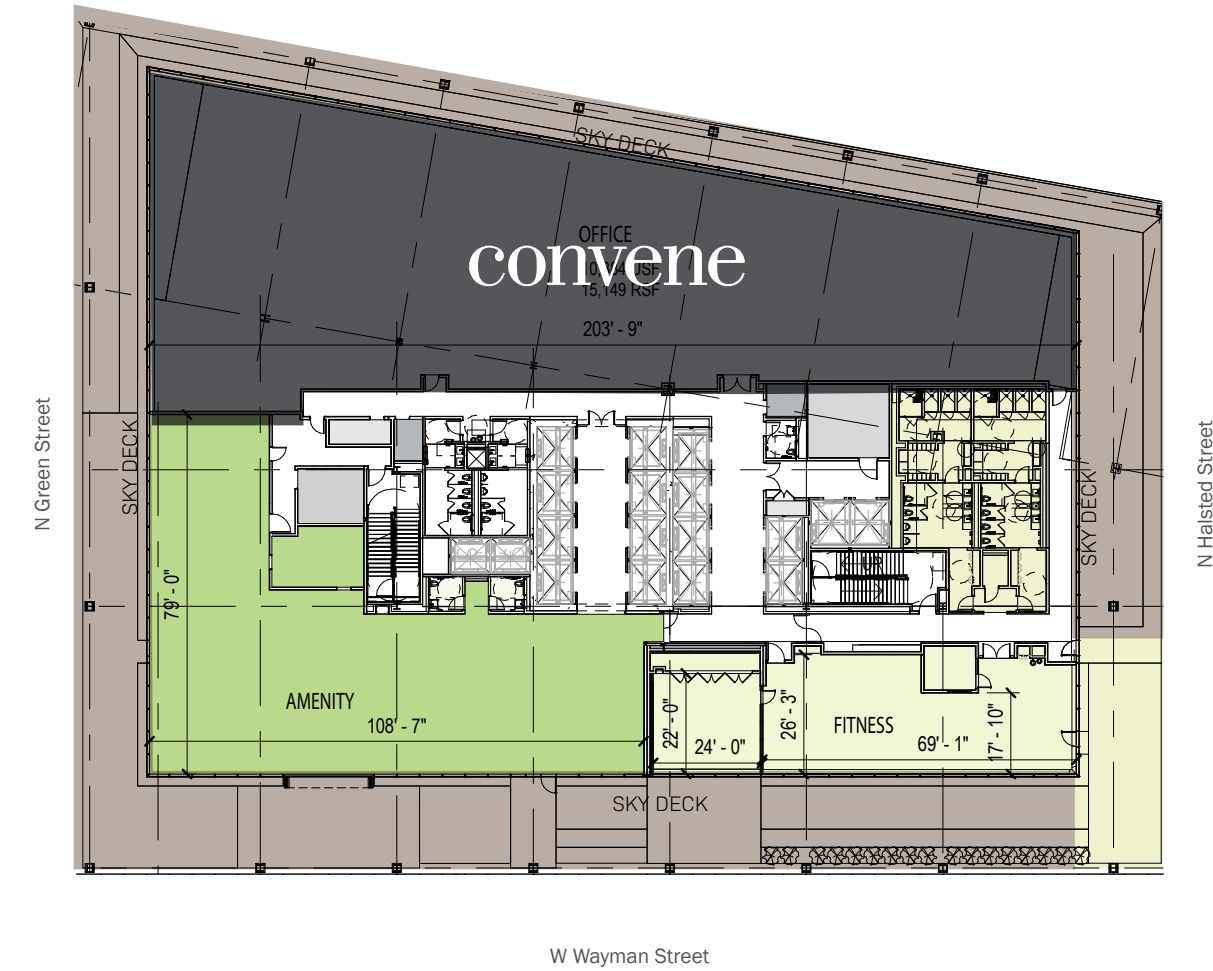
## Stacking plan

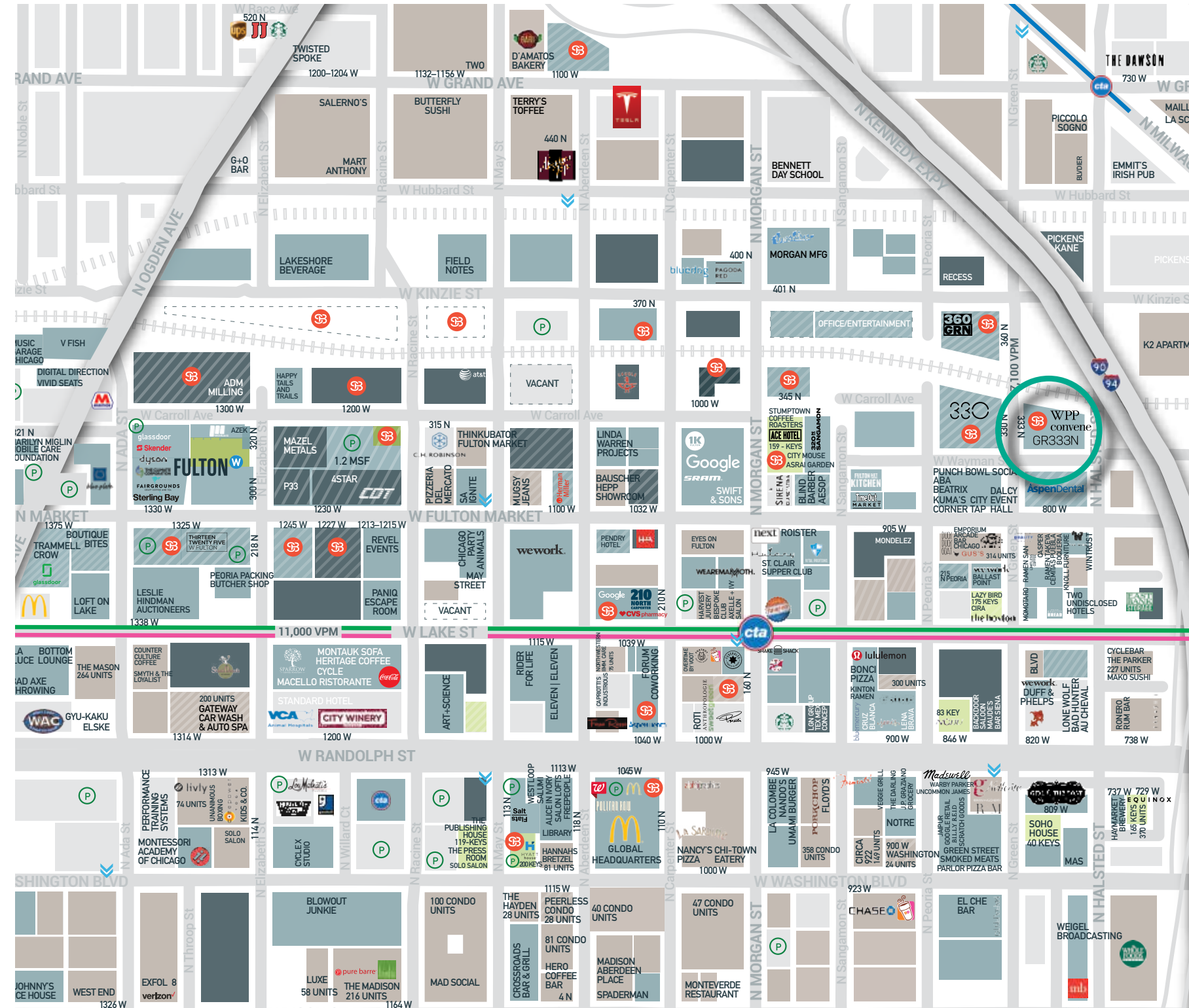


Available Space

## Tenant amenity

8,735 SF





GR333NGR333NGR333NGR333N  
GR333NGR333NGR333NGR333NG  
R333NGR333NGR333NGR333NGR  
333NGR333NGR333NGR333NGR3  
33NGR333NGR333NGR333NGR33  
3NGR333NGR333NGR333NGR333  
NGR333NGR333NGR333NGR333N  
GR333NGR333NGR333NGR333NG  
R333NGR333NGR333NGR333NGR  
333NGR333NGR333NGR333NGR3  
33NGR333NGR333NGR333NGR33  
3NGR333NGR333NGR333NGR333  
NGR333NGR333NGR333NGR333N  
GR333NGR333NGR333NGR333NG

GR333N

**FOR LEASING INFORMATION, CONTACT**

**OFFICE@STERLINGBAY.COM**

**312.202.3478**

**330NORTHGREEN.COM**

