

GR333N

Office to Envy.

A Sterling Bay Development

IGR333N GR333N GR333 GR333N
R333N GR333N GR333N GR333N
333N GR333N GR333N GR333N
333N GR333N GR333N GR333N
33N GR333N GR333N GR333N
N GR333N GR333N GR333N
IGR333N GR333N GR333N GR333N
GR333N GR333N GR333N GR333N
R333N GR333N GR333N GR333N
333N GR333N GR333N GR333N
33N GR333N GR333N GR333N
3N GR333N GR333N GR333N
IGR333N GR333N GR333N GR333N
GR333N GR333N GR333N GR333N

GR333N



Office to Envy.

Introducing 333 North Green, a ground-up new construction 555,524 square foot creative office and prime retail building located in Chicago's most dynamic neighborhood: Fulton Market. Developed by Sterling Bay and designed by Gensler, 333 North Green is the future of Fulton Market office destinations. With forward-thinking design, a robust amenity package and an unbeatable location, 333 North Green will redefine how you office.



The Desired Details.

19 stories

553,443 SF

32,221 SF available

Designed by Gensler

Efficient 40,000 SF floor plates

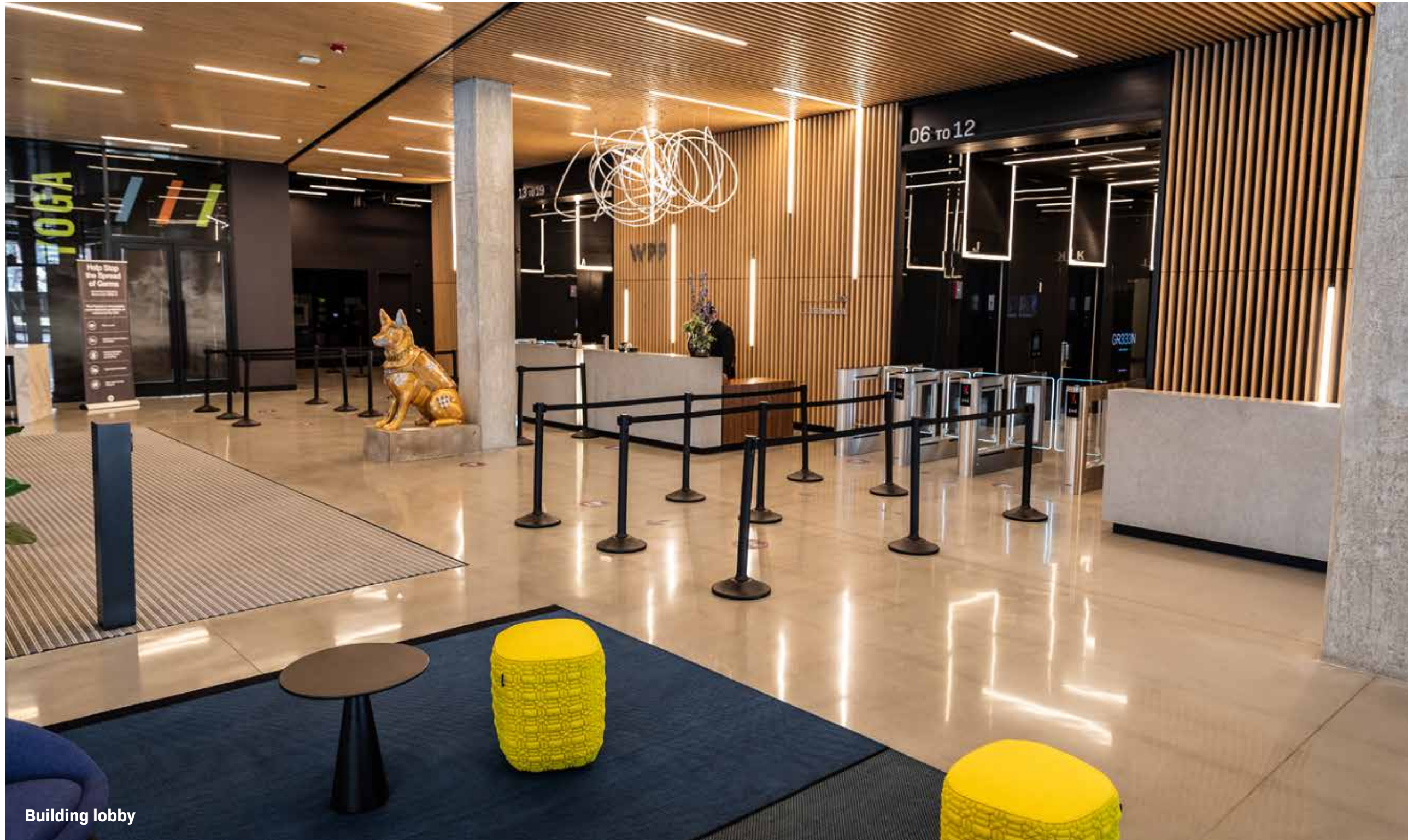
Minimal columns

Robust amenity package

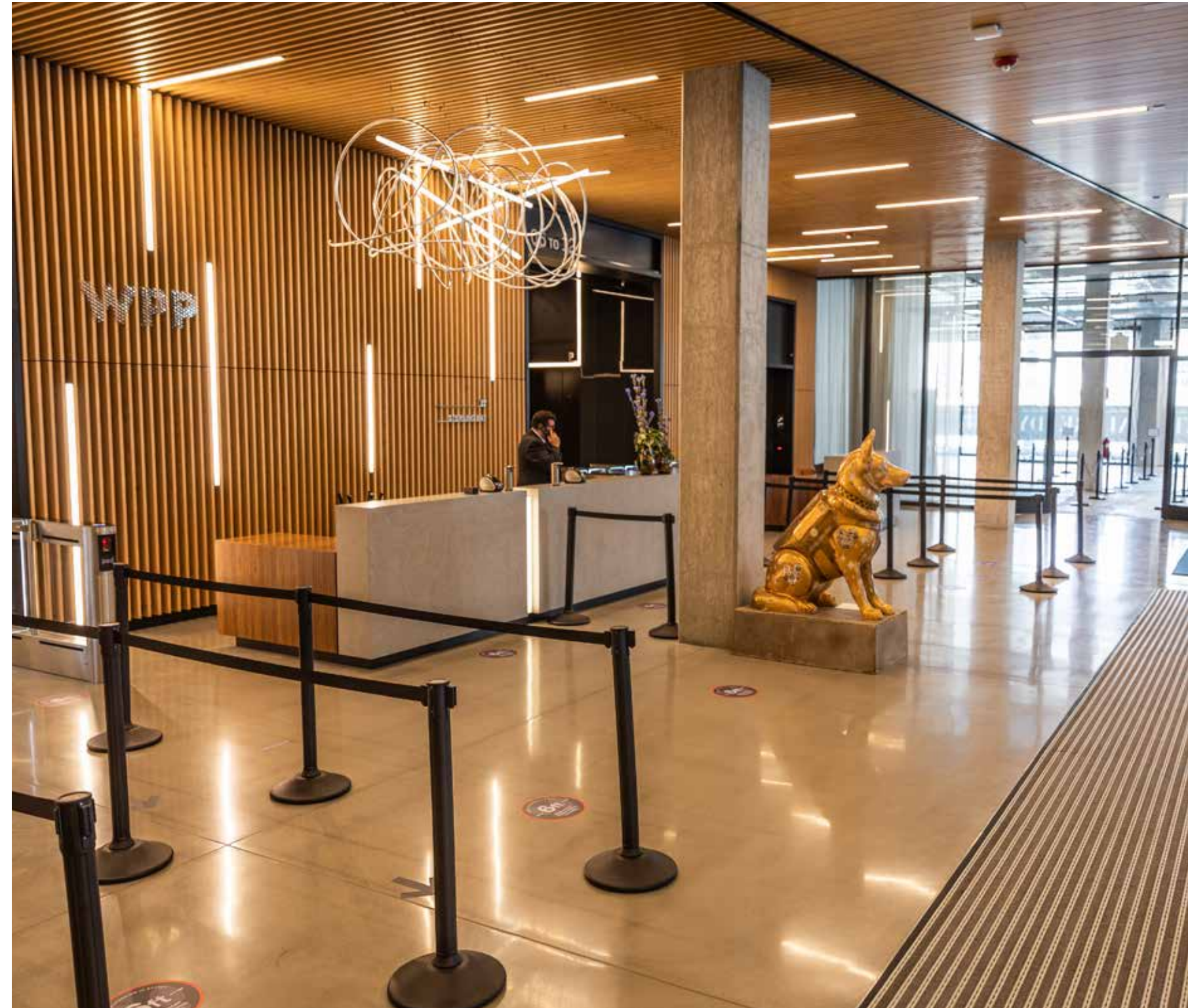
29,000 SF of prime retail

Immediate Delivery





Building lobby





Amenity space

Lustworthy Amenities.

The tenant amenity package at 333 North Green is unmatched in the market and will include:

Sky deck overlooking the city

Tenant lounge, bar and gaming area

Full-service fitness center

Programmed yoga room

Conference facilities

Building library

Shuttle service to Ogilvie and Union stations

Secure bike room

24-hour security

Indoor parking for over 300 cars

Insider access to SB+

Pressbox dry cleaning

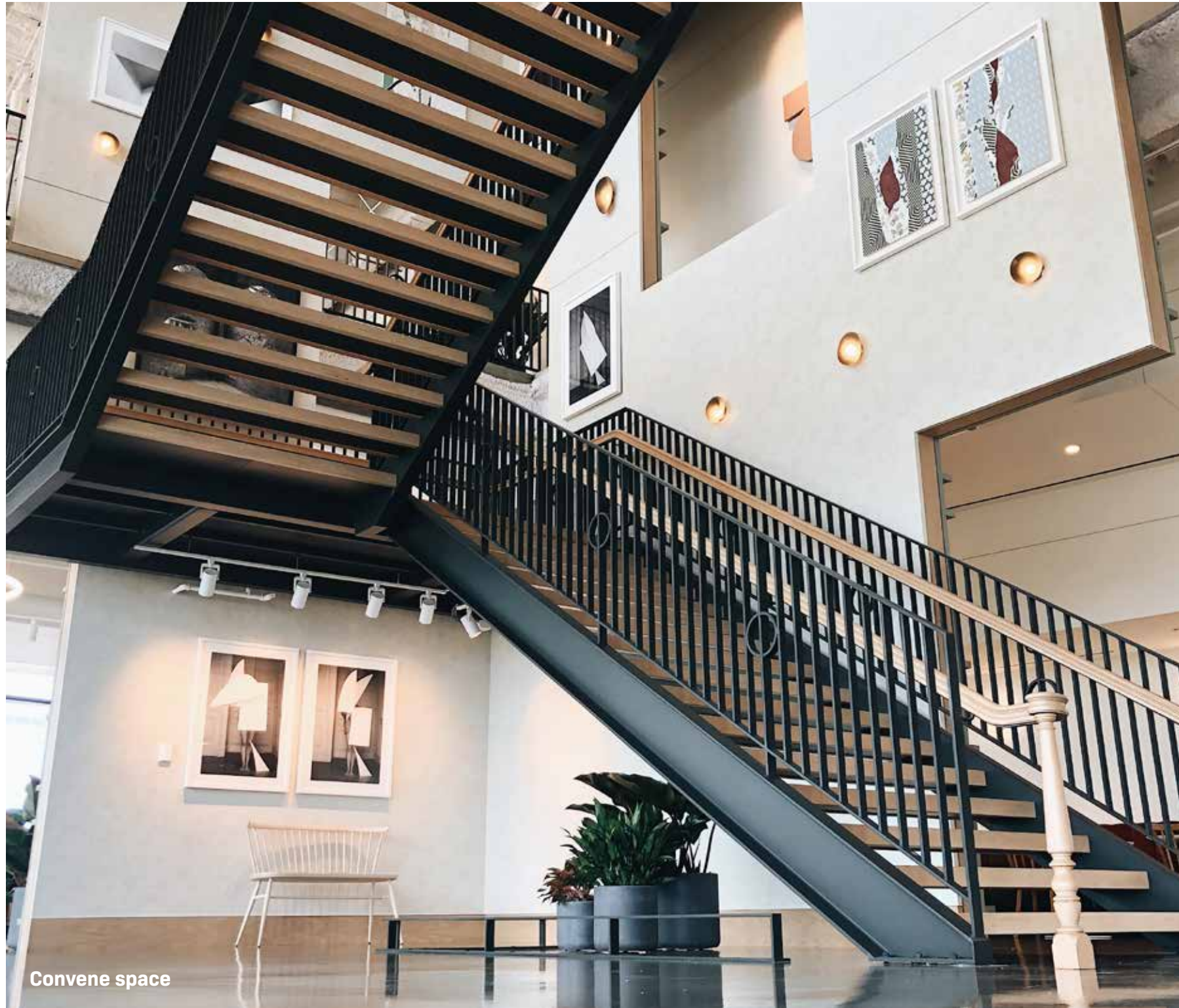
Over 29,000 SF of prime retail



Amenity space



Amenity space



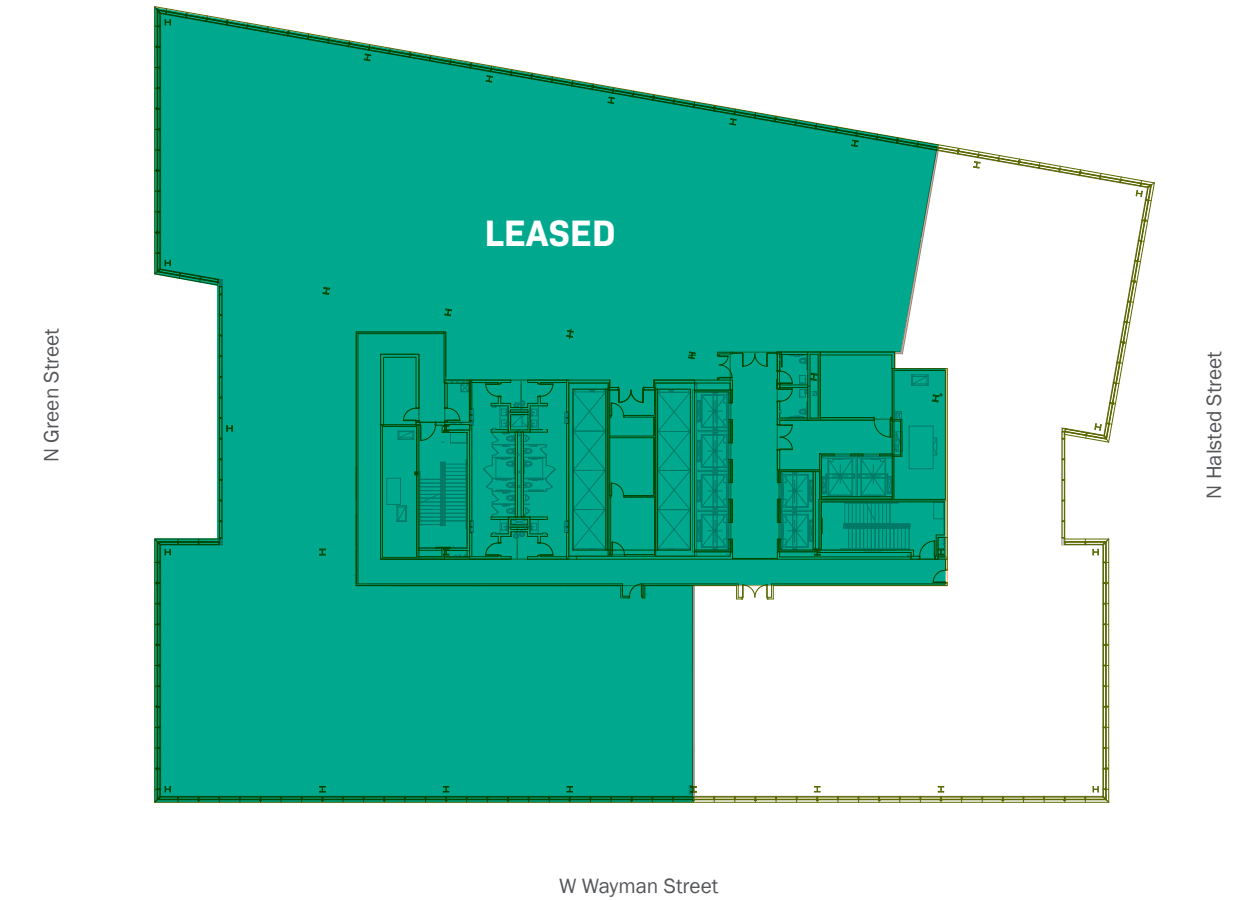
10th Floor availability

~20,000 SF

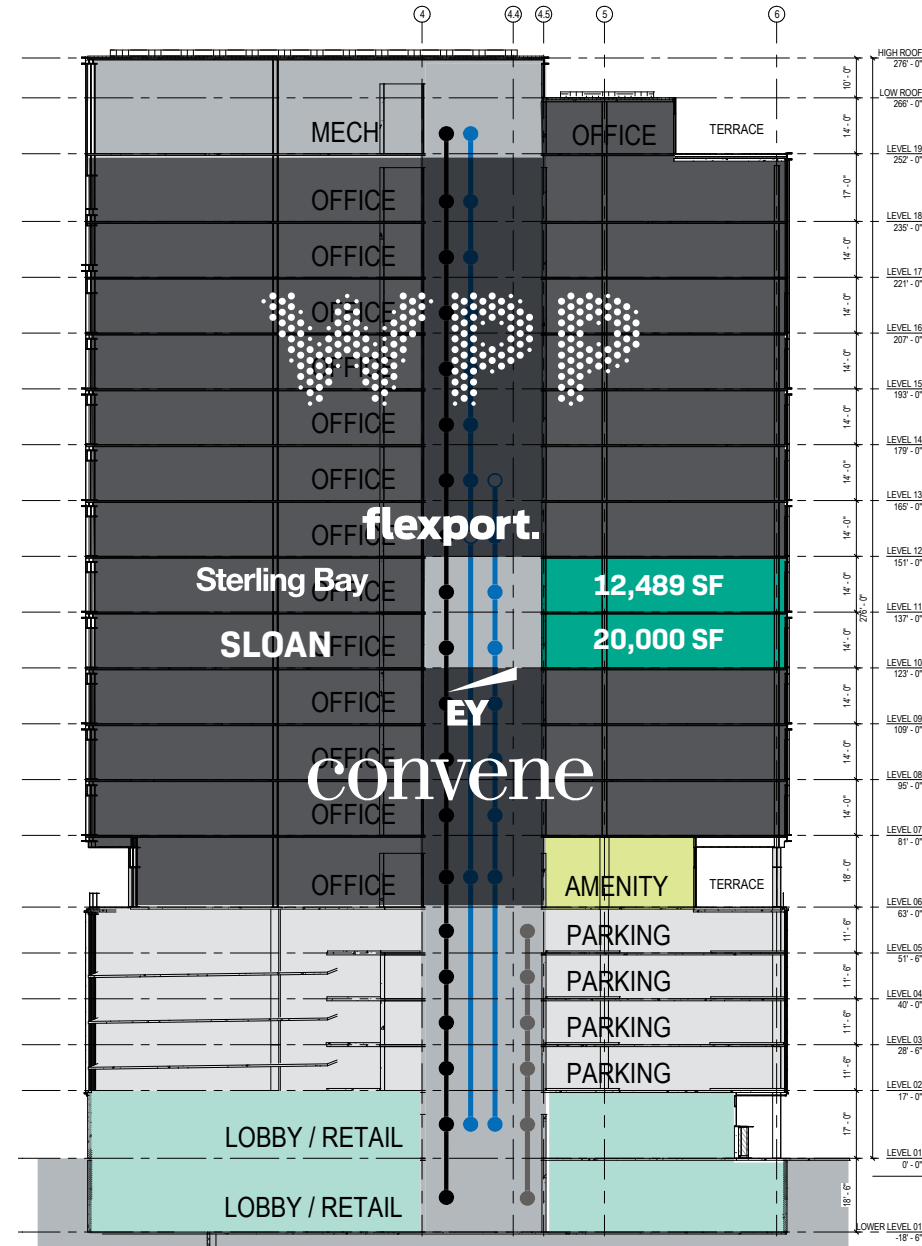


11th Floor availability

12,489 SF



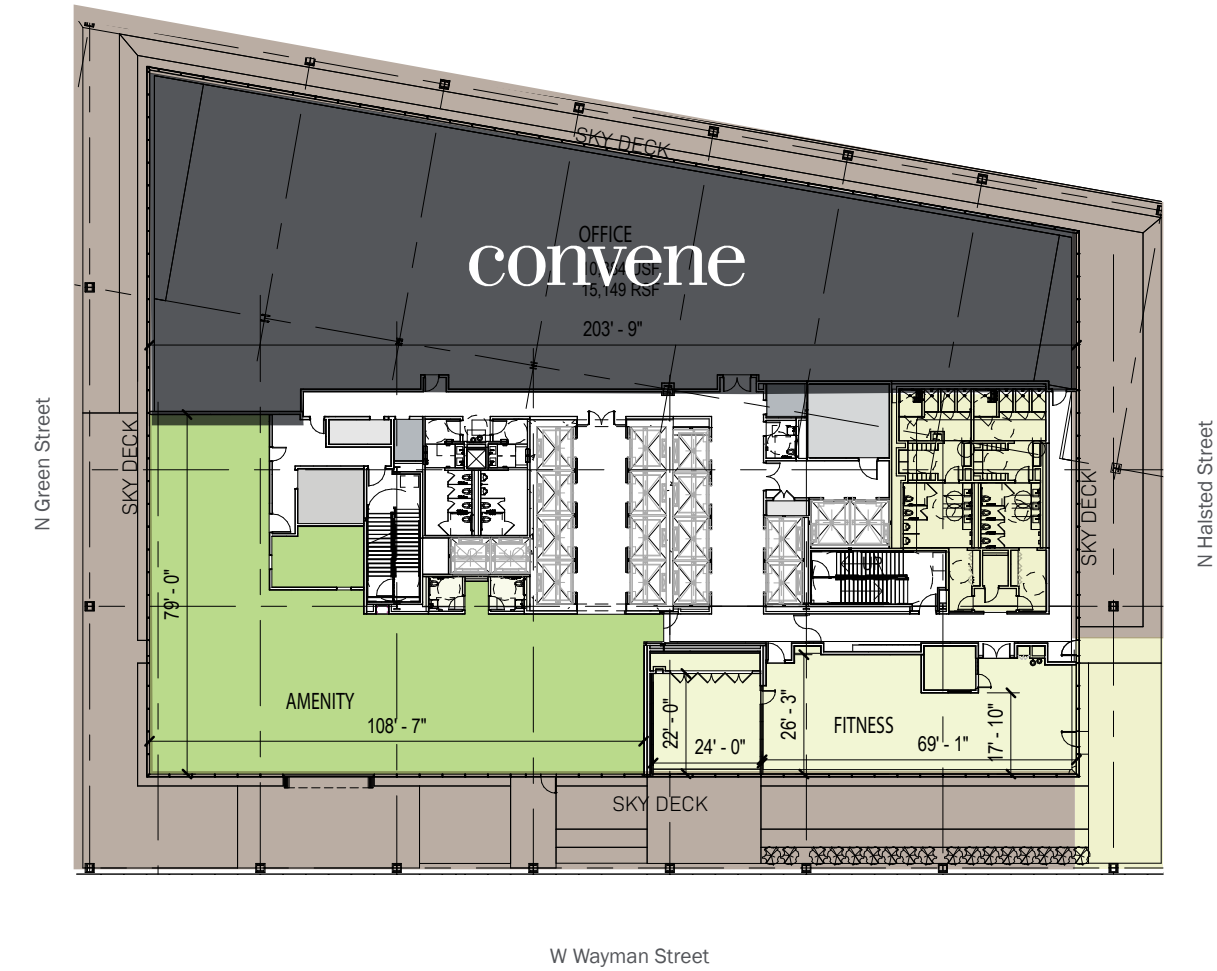
Stacking plan

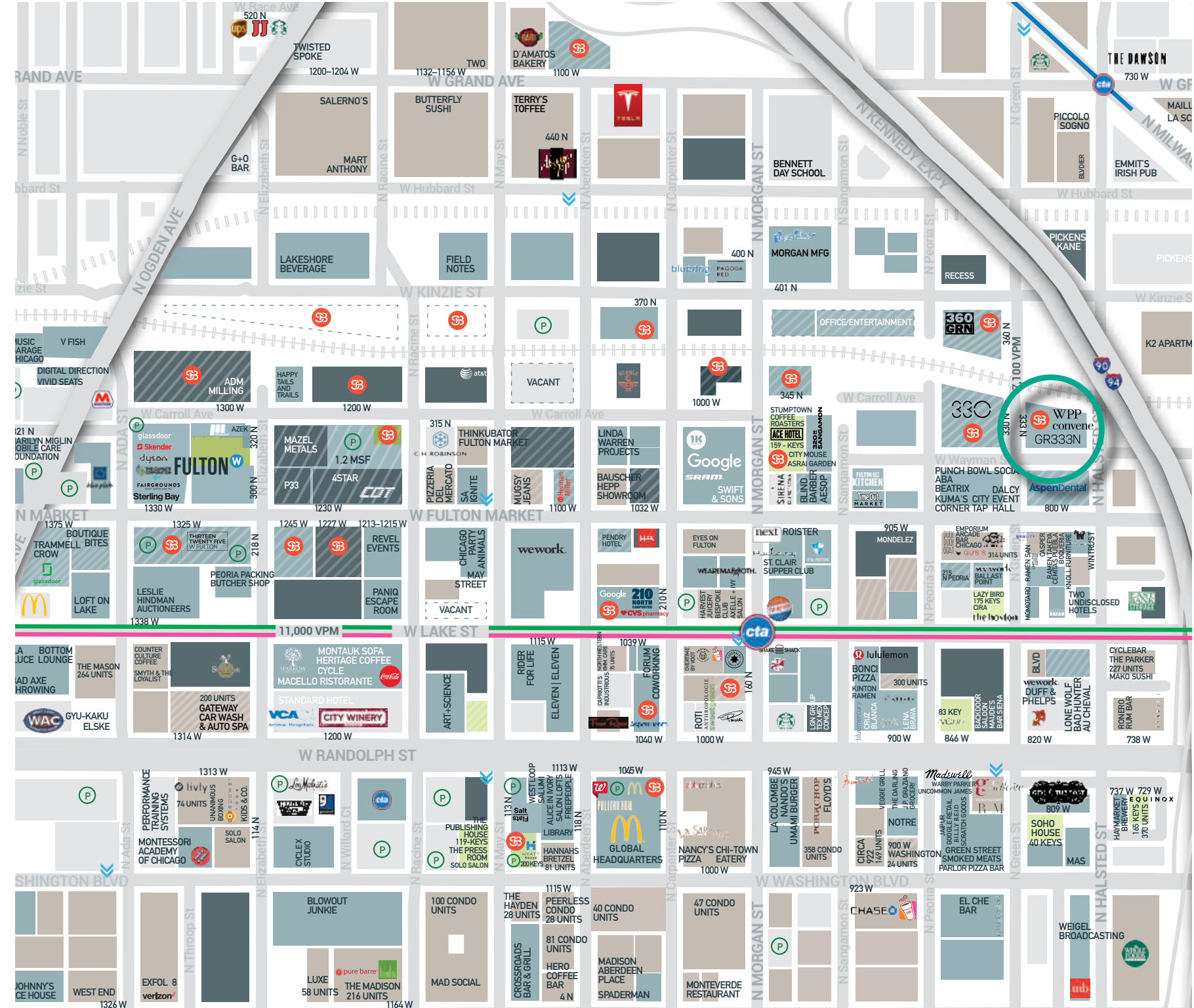


Available Space

Tenant amenity

8,735 SF





GR333NGR333NGR333NGR333N
GR333NGR333NGR333NGR333NG
R333NGR333NGR333NGR333NGR
333NGR333NGR333NGR333NGR3
33NGR333NGR333NGR333NGR33
3NGR333NGR333NGR333NGR333
NGR333NGR333NGR333NGR333N
GR333NGR333NGR333NGR333NG
R333NGR333NGR333NGR333NGR
333NGR333NGR333NGR333NGR3
33NGR333NGR333NGR333NGR33
3NGR333NGR333NGR333NGR333
NGR333NGR333NGR333NGR333N
GR333NGR333NGR333NGR333NG

GR333N

FOR LEASING INFORMATION, CONTACT

GILLIAN KEEBLER

GKEEBLER@STERLINGBAY.COM

312.202.3478

OFFICE@STERLINGBAY.COM

330NORTHGREEN.COM

